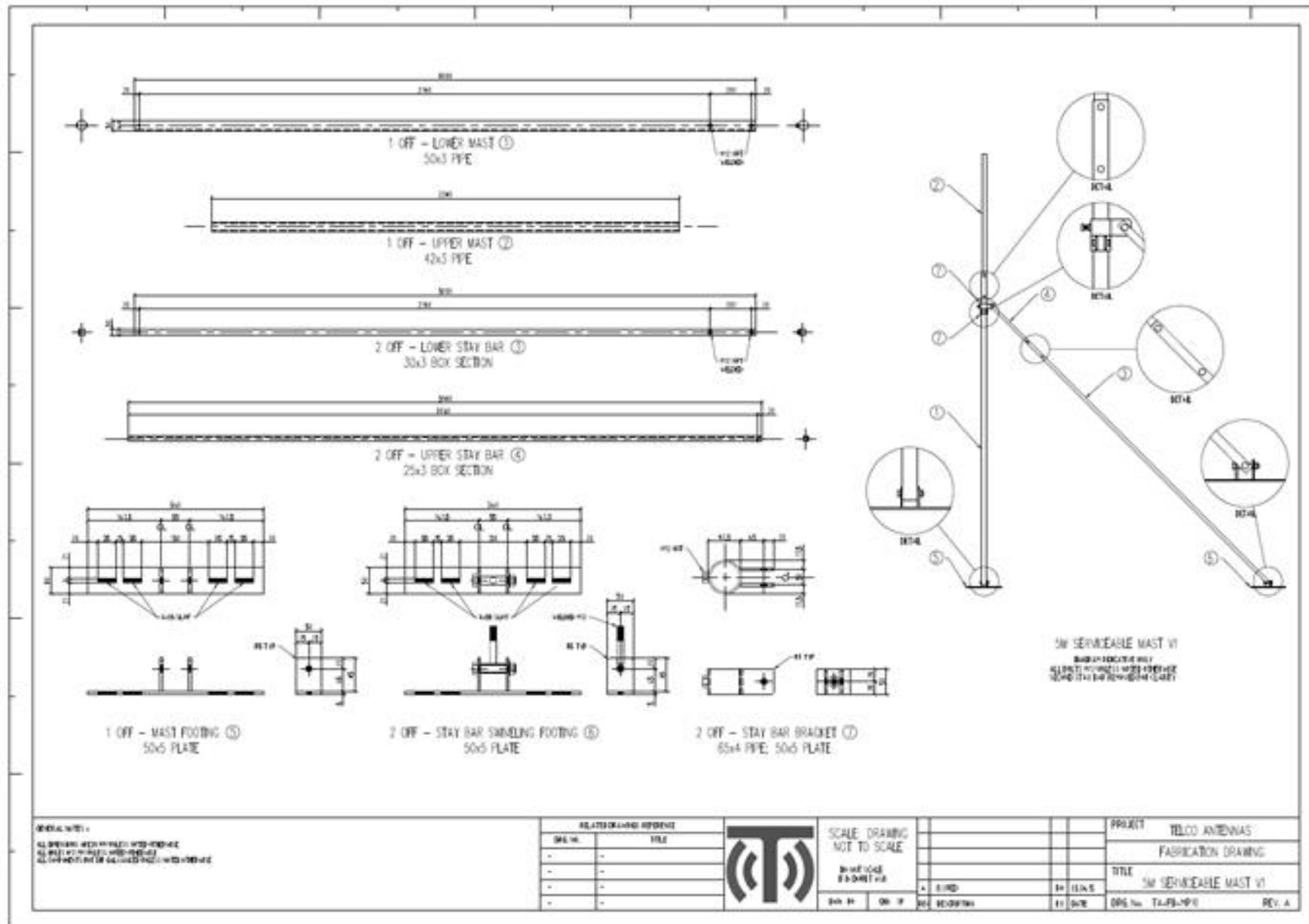




5m Serviceable Tin Roof Mast Installation Guide

1. Unpack components.



2. Determine the location of mast & remove relevant roof screws.



3. Re-screw and attach mast baseplate.



4. Ensure baseplate is securely attached (both screws).



5. Remove/undo bolt.



6. Slide collar of adjustable stay bar onto the base section of mast.



7. Slide second stay bar collar onto base section of mast.



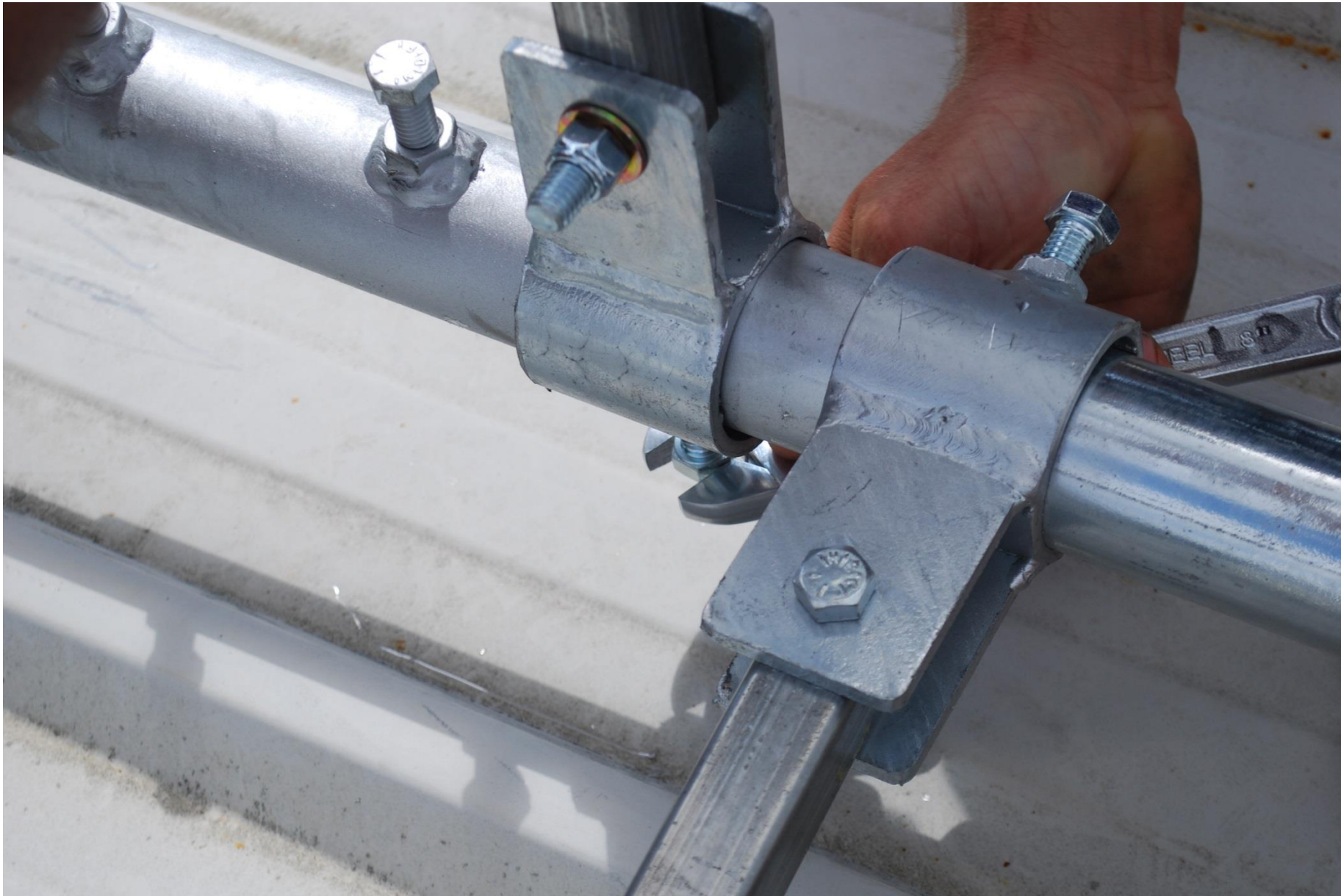
8. Tighten collars onto mast to prevent slipping but allowing for manual re-orientation.



9. Orientate the stay bars to be 90° / perpendicular to each other.



10. Secure collars in place by tightening bolts.



11. Bolt mast base onto baseplate allowing for movement.



12. Determine position of first strut baseplate (approx. 2m from mast base at 90° to each other).



13. Remove relevant roof screws.



14. Attach/screw strut base plate to roof.



15. Extend mast top section to desired height leaving a min. 250mm inside base section.



16. Secure in place by tightening bolt.



17. Ensure top section is securely attached (both bolts).



18. Determine position of second strut baseplate (approx. 2m from mast base at 90° to each other)..



19. Attach/screw strut base plate to roof.



20. Raise mast to upright position.



21. Use a level to ensure mast is vertical.



22. Tighten stay bar bolts to lock into place.



23. Ensure both stay bars have been tightened.



24. Tighten mast base plate bolt.



25. Tighten bolt of stay bars.



26. Check all bolts and tighten if necessary.



27. Mast Installation complete.



28. *Refer to additional guides for antenna & equipment installation.*

